



# Find'n'Secure<sup>TM</sup>

Tracking & Fleet Management Software



Find'n'Secure™ is an innovative and cost effective web based real-time GNSS tracking & fleet management solution comprising of hardware as well as software. Find'n'Secure™ incorporates GNSS / Satellite / GPRS / WiFi technologies that enable continuous control and tracking of location of the vehicles etc. It is a unique way to monitor and control your fleet to their precise details by sitting in the office or from home. It

also enables you to monitor the movements of your employees, children, pets, containers or any other moving asset accurately. Whether you are a small, mid-sized or a large Corporation, Find'n'Secure™ is a complete state-of-the-art in-house solution for all your tracking and fleet management requirements.

## New Features

### Maps

Find'n'Secure now supports Google Maps, OpenStreet, Bing, Cloudmate, ESRI and many other maps. Even customized maps may be used for tracking purposes.

### Trackers & Users Expiry

Set expiry date of a user account as well as each tracker. Reminders are automatically generated to the user informing about the upcoming date of expiry.

### Trackers Groups & Permissions

Organize a fleet by associating each tracker to different user accounts or group. Also restrict users to specific modules, or no-edit menu (i.e., only for the purpose of viewing a limited information / movement).

### Driver Scoring Report

Evaluate the driving pattern of drivers by comparing score of each driver, depending on harsh acceleration, harsh braking, excessive idling, exceeding speed limit etc.

### Engine Hours Report

Analyze the work done when ignition is ON, work done for a day, and total work done for a specific time period. Generate and compare work done by two engines.

### ETA & Route Optimizer

Calculate the Estimated time of arrival of any tracker at any location using ETA module. Find out the optimized path to a destination via various waypoints.

## Other Features

- Real time location plotting.
- Available in over 21 languages, with customization capability in any language.
- Supports multiple timezones.
- Vehicle controls on web platform.
- RFID based asset tracking.
- Drivers' management using RFID and iButton.
- Path drawing and scheduling.
- Group mode for viewing multiple trackers on a single screen.
- Lightning fast plotting speed.
- Supports fuel and temperature sensors besides any three additional sensors.
- Reports available in HTML, PDF and Excel formats.
- Extensive time specific scheduling of geofences.

- Quick POI (Point of Interest) creation.
- Trip-wise and continuous history plotting with playback options without any time limit.
- Easy scheduling of alerts and reports to be transmitted via E-mail / SMS.
- Ability to limit E-mail and SMS delivery to save on operator charges.
- Automatic reminders based on distance/date/engine hours etc.
- Odometer support with time based calibration.
- Search trackers using filters like name, IMEI, SIM number, status, address, speed, etc.
- Polygonal (with unlimited sides) and circular geofences.
- Find the best path, using Route Optimizer.
- Assign tasks using Job Scheduler.

Find'n'Secure+ for schools has been especially designed for schools / colleges to know the precise movement of buses ferrying the students. It offers a management solution that uses cellular network connectivity and GNSS based location information to locate school buses in real-time, and, an intuitive portal to significantly improve safety and efficiency of the fleet. Parents get Pick Up, Drop alerts when the bus is

nearing their home destination so that they need not wait for long time for their kids. If the bus exceeds the prescribed speed, over speeding alerts on the portal or mobile phone of the School Transport Manager / any other designated authority are automatically generated. Find'n'Secure+ has the following alerts for parents :

## Alerts for parents

- ➡ Picked up from home
- ➡ Dropped at school
- ➡ Not dropped at school
- ➡ Dropped but not at school
- ➡ Picked up from school
- ➡ Reaching home
- ➡ Dropped at home
- ➡ Not dropped at home
- ➡ Dropped but not at home

This apart, under the Driver Profile menu, school management may analyse the driving pattern of the driver and carry out complete assessment of the driver performance. All the

exceptions like harsh braking, harsh acceleration, sharp cornering are recorded by the software and may be used for evaluating the driver's performance.

## Special Features

- Easy to use Web Interface for School Administration.
- Single list view displaying status of all the School Buses at a glance.
- GNSS location on digital maps with zoom in / out option.
- Replay the route history of each bus for one year.
- Alerts on Over Speed and Undue stoppage.
- Secured Login ID and Password for accessing the information on Web interface by parents.

## Available Reports

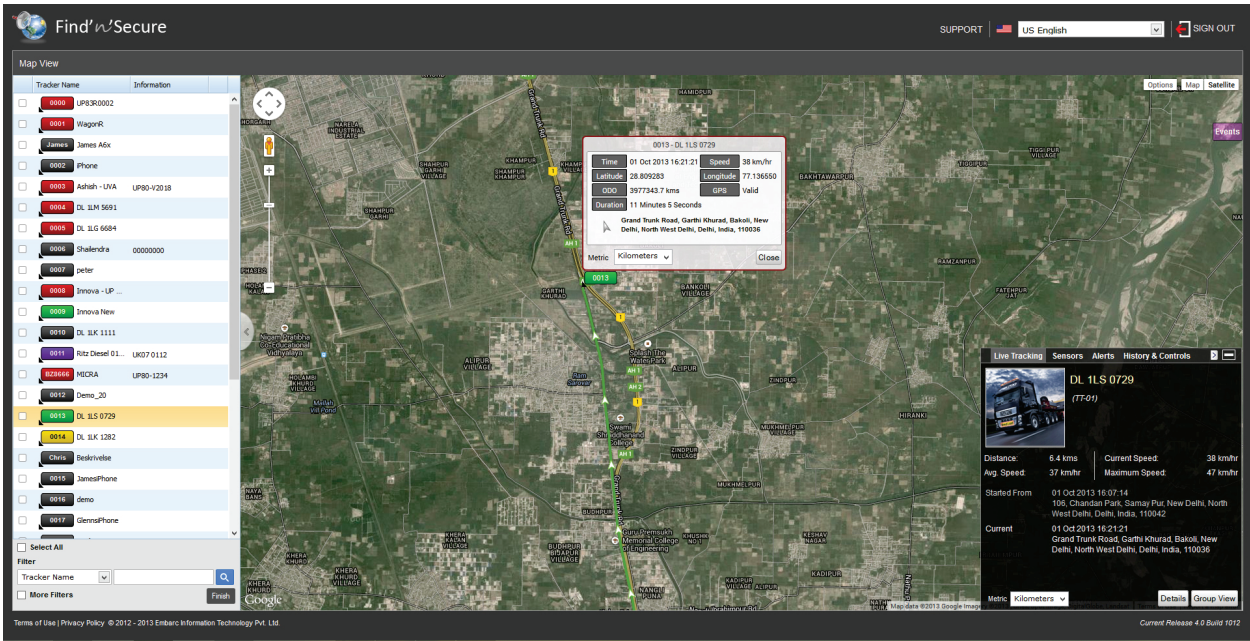
- Consolidated Report
- Trips Report
- Speed violation Report
- Idling Report
- Journey Report
- Driver Scoring Report
- Student Management Report



# Find'n'Secure™

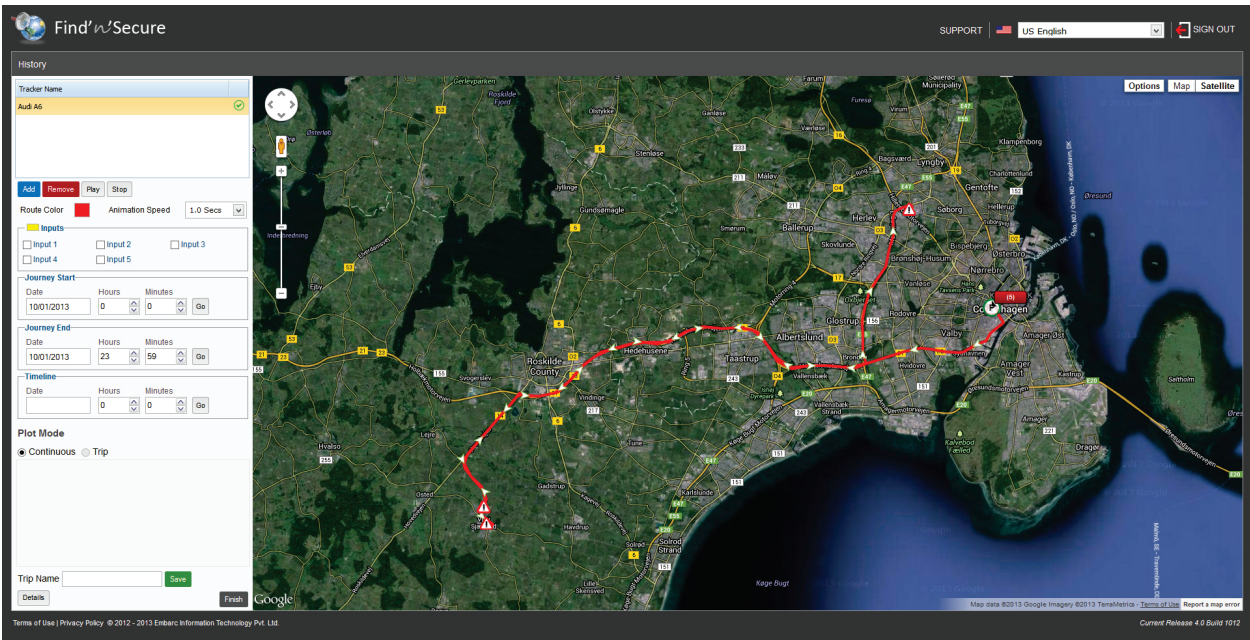
## Software Screenshots

### Real-time Tracking



The picture given above shows the live tracking screen of the software. You may view single or multiple trackers live on the map and on clicking the specific tracker in the list displayed on the left side of the screen, the opening window displays tracker number / name, date, time, driver's name, speed and location. On clicking "Track" button in the window on the map, live tracking of the vehicle etc. is displayed. In the latest Version of the software i.e., Ver. 4.0.1 new icon of "No-GPS" has been added which shows the devices which are connected to GSM but having no GPS coverage.

## History



History tool displays past history of the tracker on the map and details about its movement. It automatically breaks the trips and helps you in naming the interesting trips for future references. Completely redesigned interface with all the options right on the home screen makes it much easier to use with more information than ever.

# Find'n'Secure™

## Mobile Edition

- ➔ Converts your GPS enabled smartphone into a personal tracker
- ➔ Track your vehicles/assets/family and friends, using your mobile phone
- ➔ View real time location plotting on Find'n'Secure web application
- ➔ Available for Android and iOS platforms



Figure 1: Android App



Figure 2: iOS App



## Plans Offered



### Find'n'Secure™ for Resellers

Find'n'Secure™ for Resellers is a complete tracking software hosting with account management control. Under this plan you may offer full-fledged tracking services to your customers and quickly start tracking business at a minimal investment. This plan also enable business houses to undertake their fleet management at affordable cost. All other back-office services e.g. maintenance of servers, software upgrades etc. are taken care of by us. Co-branding with Find'n'Secure™ is also available.



### Find'n'Secure™ for Enterprises

Find'n'Secure™ for Enterprises is a complete tracking solution hosted at your end or at a data center of your choice. One-time licensing fee, customized features and scalable architecture make it fast and affordable way to adopt enterprise solution for business or in-house use. In this model you also have root access and access to API's to connect FnS to other third party applications. You may also re-brand the solution to maintain your distinct identity.

## Getting Started

### Starter Kit

Find'n'Secure™ Starter kit helps you in exploring and understanding the Find'n'Secure™ tracking and fleet management solution. Starter Kit also enables you to give demonstration to your prospective clients / investors. Once you have complete technical and commercial knowledge of the system, you may decide which version – Find'n'Secure™ for Resellers or Find'n'Secure™ for Enterprises – is best suited for you. The starter kit comprises of the following items and facilities :

- Vehicle tracking device with accessories.
- Find'n'Secure™ tracking device configuration utility.
- Demo trial account for two months.
- All technical help required to setup the device and understand the hardware & software.





Vehicle Tracker VT-62

GPS Tracker VT-62 - a compact terminal with integrated GPS and GSM antenna, which can get device coordinates and transfer them

via GSM network. This device is perfectly suitable for applications when you need to locate the remote object.



Technical Specifications		
GSM	Quad-band 900/1800 MHz; 850/1900 MHZ	
GPS	NMEA, GGA, GGL, GSA, GSV, RMC, WGS-84 protocol compatible	
Sensitivity (tracking)	-161 dBm	
Power supply	DC 10V to 30V	
Dimensions (LxWxH)	73mm x 72.5mm x 27.3mm	
Temperature range	-25°C ~ +75°C	
Interface	1-Wire®	

Digital Inputs	Digital Outputs	Analog Inputs
2 Digital Inputs	2 Digital Outputs	1 Analog Input

Vehicle Tracker VT-80

VT-80 is state-of-the-art terminal with GLONASS/GPS positioning and GSM/GPRS connectivity. This device is loaded with features like RFID tracking; CAN interface; two-way communication. This device is

perfectly suitable for real time tracking and parameters monitoring. This offers complete fleet management solution.



Technical Specifications	
GSM	Quad-band 900/1800 MHz; 850/1900 MHZ
GPS	NMEA-0183 protocol
Sensitivity (tracking)	-161 dBm
Power supply	DC 10V to 30V
Dimensions (LxWxH)	104mm x 76.8mm x 31.5mm
Temperature range	-25°C ~ +75°C
Battery	Internal and external options

Digital Inputs	Digital Outputs	Analog Inputs	Serial Port
4 Digital Inputs	4 Digital Outputs	4 Analog Input	2 Serial Port

Personal Tracker PT-51

The PT-51 is a powerful GSM/GPS/WiFi tracker for personal tracking with superior receiving sensitivity, fast first fix and Quad band GSM. PT-51 can communicate with the backend server through the GPRS/WiFi network to

transfer report of emergency/SOS, Geo-Fence boundary crossing, low battery or scheduled GPS position, cell ID or WiFi access point MAC address.



Technical Specifications	
GSM	Quad-band : 850/900/1800/1900MHz
GPS	uBlox
Wifi Chipset	MTK MAC/BB WLAN chip
Charge Voltage	5V DC
Dimensions (LxWxH)	94 x 48.5 x 18 mm
Temperature range	-20°C ~ +75°C
Battery	Li-ion 1000mAh, 3.7V

Additional Functions	
SOS Emergency button	2-way voice communication

Pet Tracker FS-29

FS-29 is a waterproof (IP67), small in size, and, light weight tracker. FS-29 is easy to carry and specially designed for children, old / disabled people and pets. Through GPS and GSM/GPRS

communication, FS-29 can get its position and send location data to your telephone or server for personal tracking. FS-29 supports SOS button to send SMS alarm for rescue, and has a special charger.



Technical Specifications	
GSM	850/900/1800/1900Mhz
GPS	Sirf III chipset
Sensitivity (tracking)	-159 dBm
Weight	42.6 gm
Dimensions (LxWxH)	50mm x 40mm x 20mm
Operating Temperature	-10°C ~ +65°C
Storage Temperature	-20°C ~ +70°C
Battery capacity	3.7 V DC Li-Ion Battery, 750 mA

Additional Functions	
SOS Emergency button	Waterproof (IP67)

Offender Tracker FS-68

FS-68 is the smallest and the most powerful Offender Tracker in the world. It is water proof and vibration proof. Using highly sensitive GPS module and Quad-band GSM/GPRS module, the Offender Tracker

can perform tracking and security monitoring for all personnel, offenders around the globe.



Technical Specifications	
GSM	Quad-band : 850/900/1800/1900
GPS	-159 dBm
Weight	130gm
Warm-up time	120 seconds
Power consumption for standby	10mA with GPS off
Dimensions (LxWxH)	83mm x 55mm x 27mm
Temperature Range	-30°C ~ +80°C

Satellite Tracker SS-81

A compact device with GPRS and satellite connectivity, SS-81 provides uninterrupted global coverage at the lowest message cost.



Technical Specifications	
Satellite Network	Inmarsat
Frequency	850/900/1800/1900 MHz
Temperature Range	-30°C ~ +65°C Transceiver: ~244 g
Weight	Satellite Antenna: 379 g (with 5 m cable)
Power Supply	DC 9V~32V
Dimensions (LxWxH)	Transceiver: 155 x 124 x 41mm Satellite Antenna: 127 x 93 x 23mm

Digital Inputs	Digital Outputs	Serial Port
6 Digital Input	Ignition Cut	1 Serial Port